

# Corporate Profile

## Mitsubishi UBE Cement Corporation

Iino Building, 2-1-1 Uchisaiwaicho, Chiyoda-ku, Tokyo 100-8521  
Tel. +81-3-6275-0333 Fax. +81-3-6275-0375  
<https://www.mu-cc.com/>



# Infinity with Will

We will never stop working to support the future of society and the planet.

Advancing social infrastructure.

Innovating solutions for environmental sustainability.

Safeguarding the life of each and all.

As our mission is bold,  
our work holds boundless hope for tomorrow.

Committed to the highest quality from the most advanced technologies and services.

Toward circular economies that grow in harmony with the environment.

Beyond the conventional onto new challenges to build a better world.

As a company with a long history of achievements, Mitsubishi UBE Cement looks forward to a future of infinite possibilities together with you.



Mission

Continue to support the future of the planet by providing the highest quality with the best technology and services.

Value

Integrity and Sincerity

Act with integrity and sincerity, and deeply pursue the essence of things.

Teamwork and Group Strength

Respect individual diversity and integrate the knowledge and skills of all employees to maximize the strength of the Group.

Challenges and Change

Boldly take on challenges and go beyond convention, continuing to innovate to meet the demands of the world.

Makoto Koyama

Representative Director & President  
Mitsubishi UBE Cement Corporation



We aim to be a global company that continues to evolve without limit

With its corporate philosophy of “Continue to support the future of the planet by providing the highest quality with the best technology and services,” Mitsubishi UBE Cement Corporation (MUCC) recognizes its mission as to continue to safeguard across generations the sustainable future of the Earth and its people by delivering a safe and secure supply of basic materials for the construction of buildings, bridges, roads, and other social infrastructure and by contributing to the development of a circular economy.

In our medium-term management strategy, which covers FY2023 through FY2025, we set forth our vision for 2030 of a “corporate group with leading technology and high profitability by maximizing the synergistic effects of business integration.” To embody this vision, we will pursue a variety of measures, with the strengthening of the domestic cement business, business growth in the U.S. and exploration of new business sites, promotion of global warming countermeasures as our top priorities.

We will realize these goals by combining and developing the spirit of challenge and innovation and exceptional technological strengths that our predecessor companies cultivated over their respective histories of over 100 years, in our aim to be a global company whose evolution is without limits.

We hope to continue to receive your further understanding and support.

Kazuto Hirano

Representative Director & Executive Vice President  
Mitsubishi UBE Cement Corporation



## ❖ Cement and Ready Mixed Concrete Business

### As a leading manufacturer in the cement industry for domestic and overseas markets in Japan, we deliver the stable supply of basic materials for social infrastructure

The Cement and Ready Mixed Concrete Business produces and sells high-quality cement and ready-mixed concrete, which are essential for the establishment of social capital in Japan and overseas. Actively using various waste materials as raw materials, we contribute to the construction of social infrastructure and the development of circular economies through our production locations all over Japan, including the Kyushu Plant, which boasts the largest production capacity in Japan, and our nationwide ready-mixed concrete production and supply network.

### Largest production capacity and supply potential in Japan

We deliver a stable supply of the basic materials that protect human life and society through the Higashitani and Ube Isa mines, with their abundant limestone resources, our production facilities, including the Kyushu Plant that is Japan's largest producer of cement, the large-scale port facilities and other infrastructure in the Ube district, and our production and distribution networks in Japan and overseas.



Kyushu Plant



From left: Ube Isa Mine; Ube Cement Plant; Mitsubishi Cement Corporation (USA) Cushenbury Plant; Long Beach Terminal

### Establishment of vertically integrated value chain on west coast of United States

We have established a vertically integrated value chain in Southern California that ranges from the cement to aggregate and ready-mixed concrete business domains. With Robertson's Ready Mix, which boasts the top share of the Southern California's ready-mixed concrete market, at its core, we are working to expand and grow the scale of our business. This includes broadening the area of our operations, while further strengthening our business foundations that extend from upstream to downstream processes.



## From construction and civil engineering materials to lifestyle products, we take advantage of the many and varied functions of limestone

In the Mineral Resources Business, we extract quality, highly pure limestone from our own limestone mine, which is one of the largest in Japan, and produce and sell products for a wide variety of applications, from upstream to downstream, ranging from construction, civil engineering, steel, and chemicals to lifestyle products. Starting with limestone and aggregate, we produce and sell lime products such as quicklime and slaked lime, civil engineering-related products such as soil stabilizer, magnesia products made with unlimited supplies of sea water and quicklime, fine material products made with lime and magnesia, and lifestyle products such as insect repellents and cosmetics.

### Extensive product range, including one of the world's largest production scales of magnesia clinker

In the calcia field, while demand for quicklime and limestone is steady, there has been an expansion of demand for neutral-based soil stabilizer. In the magnesia field, we are Japan's only manufacturer of magnesia clinker, and we also boast Japan's top share of magnesium hydroxide slurry.

### Supporting advanced technology industries such as semiconductors and automotive components

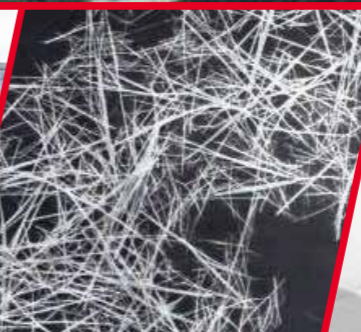
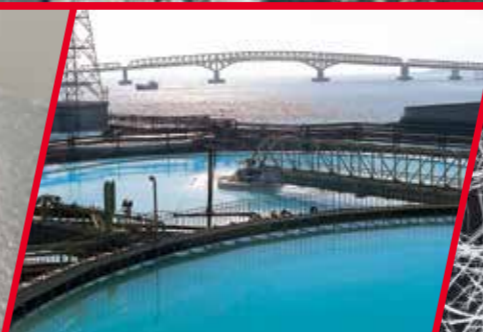
Our fine material products, created with our proprietary technology, are being put to use in cutting-edge fields, such as ultrapure calcium carbonate for use in laminated chip ceramic capacitors and other high value-added semiconductor chips and basic magnesium sulfate for use in automotive plastics.



Ube Isa Mine



Higashitani Mine



From left: Limestone; Hydrotreater; MOS-HIGE basic magnesium oxysulfate whisker; URUMIDO ceramide moisturizing cream; lime-based soil stabilizer; Green Lime LS



## Contributing to circular economies through environmental recycling Stable supply of biomass-generated electricity

With our environmental recycling business, which makes maximum use of the ability of cement kilns to process waste materials in large volumes, our coal business with its history of over 100 years, and our power business that provides coal-fired power and biomass-generated power, we will open up the environment and energy of the future.

Ube Coal Center, which boasts Japan's largest handling capacity for imported steam coal



216 MW power plant



From top: Coal reclaimer; torrefied pellets, which simplify handling of biomass through low-temperature carbonization; waste plastic processing plant; kiln at Kyushu Plant

### Detoxification of hazardous substances at high temperatures in the 1450°C range expands acceptability of difficult-to-treat waste materials

In the environmental business, we use our proprietary treatment systems to make a variety of waste materials and by-products, such as plastic waste, sewage sludge and waste plaster-board powder, available for use as cement raw materials and thermal energy. In this way, we are contributing to the building of circular economies.

### Ube Coal Center stockpiles and stores high-quality coal from all over the world

Ube Coal Center, one of Japan's largest coal yards, is a staging base for imported steam coal, stockpiling and relaying quality steam coal from various parts of the world. The electric power business, which operates a 216MW power plant, contributes to global environmental protection with the creation of diverse renewable energies such as biomass.



## ❖ Research and Development

In addition to the development of high-performance construction materials, we take on the challenge of technological development related to decarbonization and resources recycling, broadly meeting emerging needs

Based on long years of knowledge accumulated in the cement research field, we develop high-performance cement, concrete and cement-based soil stabilizer satisfying diverse requirements, such as fluidity, strength, durability, ecofriendly, and others. We've been also developing recycling technologies of waste materials and by-products and decarbonization technologies.

**Our group-wide research and development covers extensive research fields, and we strive for leading technology**

Our research and development fields are wide-ranging, from the development of construction materials to the areas of decarbonization, resources-recycling, and environmental improvement for a sustainable society. Our research and development center has been accumulating technologies and knowhow for business field expansions. We continue working on the development of leading technology for new business creation and the enhancement of our research foundations towards the future.

Scenes of research and development  
From top left to right: Slump test and concrete air content test, hardened cement observation with an electron microscope, chemical analysis of cement, and raw materials  
From bottom left to right: Concrete strength test, burning experiment in the laboratory kiln for clinker sample making and recycling technology development (equipment and its furnace inside)



## ❖ Approaches to global environmental issues

**We are committed to reducing greenhouse gas emissions for carbon neutrality and circular economy**

To realize carbon neutrality, we engage in initiatives such as the promotion of energy conservation, the use of renewable energies, the use of alternative fuel, the development of low-carbon products, and the establishment of CO<sub>2</sub> capture and utilization (CCU) business models.

### 2030 targets for carbon neutrality

MUCC has set a target of reducing its CO<sub>2</sub> emissions by 40% (vs. 2013) by 2030 towards carbon neutrality across the whole group in 2050.

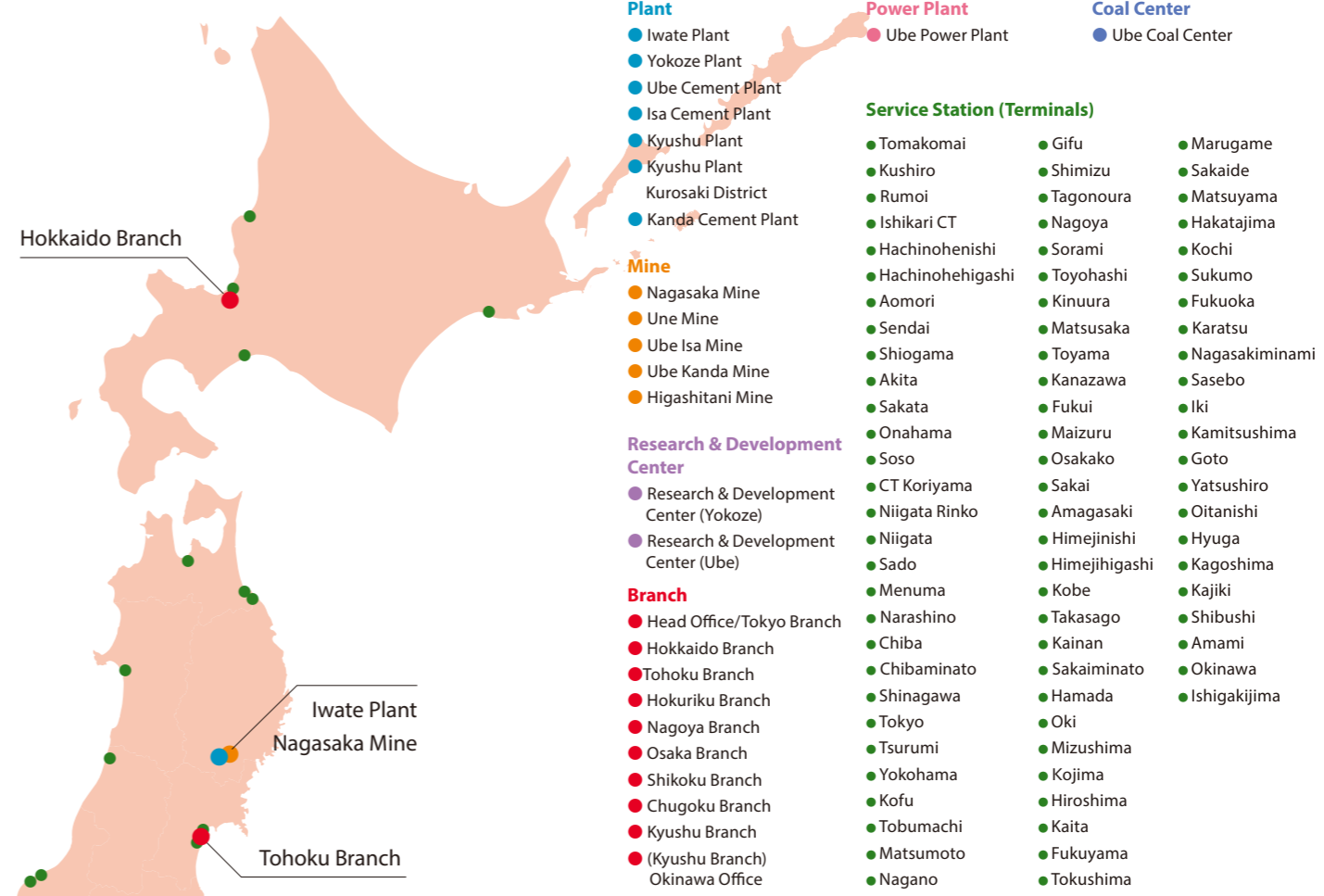
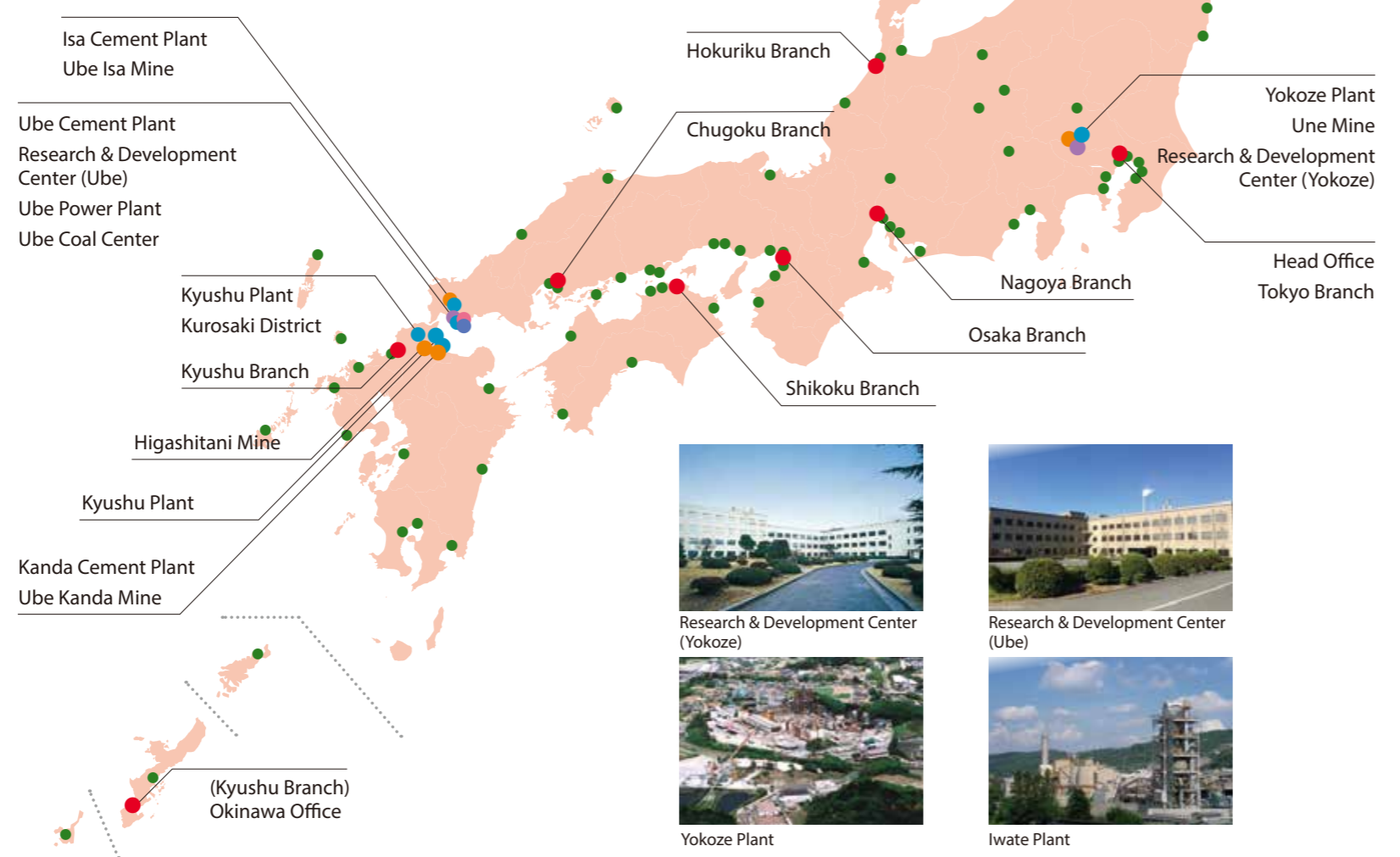
Leveraging the strengths of our accumulated technologies and supply chain, we will aim for carbon neutrality by achieving feasible and unique decarbonization schemes as a cement manufacturer.

## We demonstrate maximum synergy through our domestic and overseas networks

Through the optimization of our production systems and the rebuilding of our sales and logistics systems, including in the ready-mixed concrete business, we will promote the improvement of efficiency across our entire value chain and demonstrate maximum synergy effects. In doing so, we will contribute to the construction of social infrastructure and the development of circular economies.

### Domestic Networks

- Plant ● Mine ● Research & Development Center ● Branch
- Power Plant ● Coal Center ● Service Station (Terminals)



### Overseas Networks

- 1 Mitsubishi Cement Corporation (CA, USA / Production and sales of cement)
- 2 MCC Development Corporation (NV, USA / Investment in cement-related industries)
- 3 Robertson's Ready Mix, Ltd. (CA, NV, USA / Production and sales of ready-mixed concrete and aggregates)
- 4 Nevada Ready Mix Corporation (NV, USA / Production and sales of ready-mixed concrete and aggregates)
- 5 Hawaiian Rock Products Corporation (Guam Islands, USA / Production and sales of ready-mixed concrete and aggregates)
- 6 MCC Terminal Inc. (CA, USA / Import terminal)
- 7 Mitsubishi Materials (Australia) Pty., Ltd. (Australia / Development of coal mines)
- 8 UBE Singapore Pte., Ltd. (Singapore / Sales in Southeast Asia and purchase of materials)
- 9 Nghi Son Cement Corporation (Viet Nam / Production and sales of cement)



Robertson's Ready Mix, Ltd.



## Associated Companies, Etc.

- **Kanto Ube Holdings Co.,Ltd.**  
Estage Osaki Building, 3-5-2 Osaki,  
Shinagawa-ku, Tokyo 141-0032  
Tel. +81-3-5759-7715  
Fax. +81-3-5759-7732
- **Kanto Ube Concrete Co., Ltd.**  
Estage Osaki Building, 3-5-2 Osaki,  
Shinagawa-ku, Tokyo 141-0032  
Tel. +81-3-5759-7696  
Fax. +81-3-5759-7729
- **Kanto Ready-mixed Concrete  
Transportation Co., Ltd.**  
1-1-1 Jonanjima, Ota-ku, Tokyo 143-0002  
Tel. +81-3-3790-2388  
Fax. +81-3-3790-2389
- **Sanshin Tsusho Co., Ltd.**  
2-12-8 Shibadaomon, Minato-ku, Tokyo 105-0012  
Tel. +81-3-3434-0821  
Fax. +81-3-3434-0825
- **Shinko Transportation and  
Warehouse Co., Ltd.**  
Shibaura Naibou No.3, 3-30-1 Kaigan,  
Minato-ku, Tokyo 108-0022  
Tel. +81-3-3453-6001  
Fax. +81-3-3453-6003
- **Tokyo Ryoko Concrete Co.,Ltd.**  
5-8-20 Kounan, Minato-ku, Tokyo 108-0075  
Tel. +81-3-3471-7040  
Fax. +81-3-3471-7045
- **Ryoko Limestone Industry Co.,Ltd.**  
Ascend Kanda Building, 10-2 Kandatomiyamacho,  
Chiyoda-ku, Tokyo 101-0043  
Tel. +81-3-5289-9221  
Fax. +81-3-5289-9222
- **Ozawa Corporation**  
1-5-31 Shinden, Kisarazu-shi, Chiba 292-0832  
Tel. +81-438-22-5285  
Fax. +81-438-22-5758
- **Chiba Ube Concrete Co., Ltd.**  
220-10 Shinminato, Mihama-ku,  
Chiba-shi, Chiba 261-0002  
Tel. +81-43-243-1845  
Fax. +81-43-243-1848
- **Hokuriku Ube Concrete Co., Ltd.**  
932 Washizuka, Kosugimachi, Imizu-gun,  
Toyama 939-0305  
Tel. +81-766-55-2755  
Fax. +81-766-55-2757
- **Fuji Ube Concrete Co., Ltd.**  
258 Kijima, Fuji-shi, Shizuoka 421-3304  
Tel. +81-545-56-0033  
Fax. +81-545-56-2800
- **Tokai Ryoko Co.,Ltd.**  
5-1-4 Kiyofunecho, Nakagawa-ku,  
Nagoya-shi, Aichi 454-0832  
Tel. +81-52-361-2476  
Fax. +81-52-361-2923
- **Kansai Ube Co., Ltd.**  
4-2-23 Kaigandori, Minato-ku, Osaka-shi,  
Osaka 552-0022  
Tel. +81-6-4395-9300  
Fax. +81-6-4395-9301
- **Shinkansai Ryoko Ready Mixed  
Concrete Co., Ltd.**  
5 Otakasucho, Amagasaki-shi, Hyogo 660-0842  
Tel. +81-6-6409-0781  
Fax. +81-6-6409-0784

- **Nishiharima Ube Co., Ltd.**  
3059-13 Nakashima, Shikama-ku,  
Himeji-shi, Hyogo 672-8035  
Tel. +81-79-235-4156  
Fax. +81-79-235-9566
- **Chugoku Ryoko Co.,Ltd.**  
2-22-66 Dejima, Minami-ku,  
Hiroshima-shi, Hiroshima 734-0013  
Tel. +81-82-256-0800  
Fax. +81-82-251-9213
- **Chushikoku Ube Concrete Co., Ltd.**  
3-2 Minamimyojinmachi, Kaitacho,  
Aki-gun, Hiroshima 736-0055  
Tel. +81-82-822-2125  
Fax. +81-82-823-0550
- **Hagimori Industries, Ltd.**  
525-125 Okiube, Ube-shi, Yamaguchi 755-0001  
Tel. +81-836-31-1678  
Fax. +81-836-21-4554
- **Hagimori Logistics, Ltd.**  
3296-5 Higashisue, Ube-shi, Yamaguchi 759-0206  
Tel. +81-836-41-7546  
Fax. +81-836-41-7796
- **Ube Shipping & Logistics, Ltd.**  
1-5-5 Minatomachi, Ube-shi, Yamaguchi 755-0027  
Tel. +81-836-34-1181  
Fax. +81-836-34-1183
- **Ube industries Consulting Ltd.**  
3897-2 Higashisue, Ube-shi, Yamaguchi 759-0206  
Tel. +81-836-44-1170  
Fax. +81-836-44-1173
- **Ube Industries Cement Service Co.,Ltd.**  
1978-2 Kogushi, Ube-shi, Yamaguchi 755-8633  
Tel. +81-836-32-7741  
Fax. +81-836-32-7640
- **Ube Sand Co., Ltd.**  
332-9 Okubun, Ominecho, Mine-shi,  
Yamaguchi 759-2214  
Tel. +81-837-52-1321  
Fax. +81-837-52-1320
- **Ube Material Industries, Ltd.**  
Ube Industries Building, 8-1 Aioicho,  
Ube-shi, Yamaguchi 755-0043  
Tel. +81-836-31-0156  
Fax. +81-836-21-9778  
Kyodo Building, 1-9-2 Nihonbashimuroomachi,  
Chuo-ku, Tokyo 103-0022  
Tel. +81-3-3279-3231  
Fax. +81-3-3279-3239
- **Kano Ube Concrete Co., Ltd.**  
2697 Icchoda, Kanoshimo, Shunan-shi,  
Yamaguchi 745-0304  
Tel. +81-834-68-2638  
Fax. +81-834-68-2639
- **Sanyo Ube Co., Ltd.**  
1091-1 Asada, Yamaguchi-shi, Yamaguchi 753-0871  
Tel. +81-83-922-3511  
Fax. +81-83-922-6163
- **Yamayo Trading Co., Ltd.**  
311-5 Okubun, Ominecho, Mine-shi,  
Yamaguchi 759-2214  
Tel. +81-837-52-0660  
Fax. +81-837-52-1503
- **Kitakyushu Ube Concrete., Ltd.**  
69-2 Nishiminatomachi, Kokurakita-ku,  
Kitakyushu-shi, Fukuoka 803-0801  
Tel. +81-93-561-4331  
Fax. +81-93-561-4380

- **Seibu Construction Co.,Ltd.**  
1-15-29 Jigyō, Chuo-ku, Fukuoka-shi,  
Fukuoka 810-0064  
Tel. +81-92-771-1766  
Fax. +81-92-771-6069
- **Seibu Ready-Mixed Concrete Corporation**  
411 Shimababa, Itoshima-shi, Fukuoka  
819-1305  
Tel. +81-92-327-1321  
Fax. +81-92-327-3732
- **Chikushi Ryoko Ready Mixed  
Concrete Co., Ltd.**  
1-11-11 Mikasagawa, Onojo-shi, Fukuoka  
816-0912  
Tel. +81-92-504-1828  
Fax. +81-92-504-1827
- **Hokoku Shoji Co.,Ltd.**  
Shinei Building, 2-11-25 Daimyo, Chuo-ku,  
Fukuoka-shi, Fukuoka 810-0041  
Tel. +81-92-737-7950  
Fax. +81-92-726-0001
- **Material Kyusyu Co.,Ltd.**  
12 Matsubaracho, Kandamachi,  
Miyako-gun, Fukuoka 800-0396  
Tel. +81-93-434-0022  
Fax. +81-93-434-0282
- **Yasukawa Ready-mixed Concrete  
Corporation Industry Co.,Ltd.**  
2-6-31 Sharyo, Higashi-ku, Fukuoka-shi,  
Fukuoka 812-0068  
Tel. +81-92-611-4475  
Fax. +81-92-611-4478
- **Nagasaki Central Ready-mixed  
Concrete Corporation**  
5-642-2 Tomachi, Nagasaki-shi, Nagasaki  
850-0952  
Tel. +81-95-898-4061  
Fax. +81-95-898-4062
- **Oita Ube Co., Ltd.**  
1-7-4 Toyomi, Oita-shi, Oita 870-0018  
Tel. +81-97-534-9251  
Fax. +81-97-529-7210
- **FPA Pacic Corporation**  
P.O. Box, Tinian, MP 96952, Mariana Islands
- **Hawaiian Rock Products Corporation**  
1402 Route 15, Mangilao, Guam 96913
- **MCC Development Corporation**  
151 Cassia Way, Henderson, NV 89014-6616  
Tel. +1-702-932-3900  
Fax. +1-702-932-3909
- **Mitsubishi Cement Corporation**  
151 Cassia Way, Henderson, NV 89014-6616  
Tel. +1-702-932-3900  
Fax. +1-702-932-3909
- **Mitsubishi Materials (Australia) Pty., Ltd.**  
Suite 802, Level 8, 46 Market St. Sydney  
NSW 2000 Australia  
Tel. +61-2-9262-4992
- **Nevada Ready Mix Corporation**  
151 Cassia Way, Henderson, NV 89014-6616
- **Robertson's Ready Mix, Limited**  
200 S. Main St. Suite 200, Corona, CA 92882
- **UBE Singapore Pte. Ltd.**  
150 Beach Road #25-08, Gateway West,  
Singapore 189720  
Tel. +65-6291-9363

## Corporate Profile

## Mitsubishi UBE Cement Corporation

Iino Building, 2-1-1 Uchisaiwaicho, Chiyoda-ku, Tokyo 100-8521  
Tel. +81-3-6275-0333 Fax. +81-3-6275-0375  
<https://www.mu-cc.com/>

## Corporate Outline

■ <b>Name</b>	Mitsubishi UBE Cement Corporation (MUCC)
■ <b>Head Office Location</b>	Iino Building, 2-1-1 Uchisaiwaicho, Chiyoda-ku, Tokyo 100-8521
■ <b>Representatives</b>	Makoto Koyama, Representative Director & President Kazuto Hirano, Representative Director & Executive Vice President
■ <b>Established</b>	April 14, 2021
■ <b>Capital</b>	50,250 million JPY (as of March 31,2023)
■ <b>Accounting period</b>	March 31
■ <b>Major Shareholders and Shareholding Ratios</b>	Mitsubishi Materials Corporation: 50%, UBE Corporation: 50%
■ <b>Total Assets</b>	Consolidated: Approx. 800 billion JPY (as of March 31,2023)
■ <b>Net Sales</b>	Consolidated: Approx. 600 billion JPY (fiscal year ended March 31,2023)
■ <b>Number of Employees</b>	Consolidated: 8,070 Non-consolidated: 1,943 (as of March 31,2023)
■ <b>Business Areas</b>	Cement and ready-mixed concrete businesses in Japan and overseas (USA and others), limestone resources business, environmental and energy-related businesses (coal business, electric power business, environmental and recycling businesses), building materials business, and other associated businesses, etc.
■ <b>Associated Companies, Etc.</b>	Approx. 110 companies

## History

Mitsubishi Materials Corporation	UBE Corporation
<b>1893</b> Mitsubishi Goshi Kaisha is established.	<b>1923</b> Ube Cement Production, Ltd. is established.
<b>1918</b> Mitsubishi Mining Company Ltd. is established.	<b>1925</b> Ube Cement Production, Ltd. commences cement production.
<b>1920</b> Kanda Plant (now Kyushu Plant, then Hokoku Cement Corporation) commences cement production.	<b>1936</b> Japan's first bulk cement tanker, Kiyotada Maru, is launched.
<b>1921</b> Mitsubishi Mining Company Ltd., lists on the Tokyo Stock Exchange.	<b>1943</b> Ube Cement Plant commences production of portland blast-furnace cement.
<b>1952</b> Chikuhō Sekkai Kogyō Co., Ltd. is established (later merged with Mitsubishi Cement Corp; now Higashitani Mine).	<b>1948</b> Isa Quarry (now Ube Isa Mine) commences quarrying of limestone.
<b>1954</b> Mitsubishi Cement Corp. is established.	<b>1949</b> Ube Industries, Ltd. lists on the Tokyo Stock Exchange.
<b>1955</b> Development of Higashitani Mine commences. Kurosaki Plant (now Kyushu Plant Kurosaki District) commences cement production.	<b>1955</b> Ube Cement Plant's Isa Plant (now Isa Cement Plant) commences cement production.
<b>1958</b> Iwate Plant (then Tohoku Kaihatsu Co., Ltd.) commences cement production.	<b>1959</b> Ube Concrete Industry Co., Ltd. (now Kanto UBE Concrete Corporate) is established.
<b>1960</b> Shinryo Construction Co., Ltd. (later became Mitsubishi Construction Co., Ltd., now P.S. Mitsubishi Construction Co., Ltd.) is established.	<b>1964</b> Kanda Cement Plant commences cement production. Development of Mt. Eboshi, Kanda commences.
<b>1969</b> Yokoze Plant commences cement production.	<b>1977</b> 40-tonne hopper trailer starts operating on Ube Mine Expressway.
<b>1973</b> Mitsubishi Mining Co., Ltd., Mitsubishi Cement Corporation, and Hokoku Cement Corporation merge into Mitsubishi Mining & Cement Co., Ltd. RYOKOLIME INDUSTRY Co., Ltd. is established.	<b>1980</b> Operations start at Okinoyama Coal Center (now Ube Coal Center). Representative office is established in Singapore (now UBE Singapore Pte., Ltd.).
<b>1979</b> Aomori Plant commences cement production.	<b>1982</b> Full route of Kosan Expressway opens. Operations start at 145-MW coal-fired power plant.
<b>1988</b> Mitsubishi Cement Corp. is established in the United States. MCC Development Corporation is established. Nevada Ready Mix is established.	<b>1995</b> Ube Shipping & Logistics, Ltd. is established.
<b>1990</b> Mitsubishi Metal Corporation and Mitsubishi Mining & Cement Co., Ltd. merge to form Mitsubishi Materials Corporation on December 1.	<b>1997</b> Ube Chemical Ind. Co., Ltd. and CALCEED Co., Ltd. merge to form Ube Material Industries, Ltd. (made a wholly-owned subsidiary in 2013).
<b>1991</b> Merges with Tohoku Kaihatsu Co., Ltd.	<b>1998</b> Forms comprehensive business tie-up with Mitsubishi Materials Corporation and establishes Ube-Mitsubishi Cement Corporation.
<b>1998</b> Forms comprehensive business tie-up with Ube Industries, Ltd. and establishes Ube-Mitsubishi Cement Corporation.	<b>2004</b> Operations start at 216-MW IPP power plant.
<b>2012</b> MCC Development Corporation makes Robertson's Ready Mix, Ltd. a wholly-owned subsidiary.	<b>2015</b> UBE Construction Materials Co., Ltd. (now MU MATEX Co., Ltd.) is established.

**2022** Mitsubishi UBE Cement Corporation commences operations after integrating the cement and related businesses of both companies.

## Business Locations

■ <b>Head Office</b> Iino Building, 2-1-1 Uchisaiwaicho, Chiyoda-ku, Tokyo 100-8521 Tel. +81-3-6275-0330 Fax. +81-3-6275-0375	■ <b>Higashitani Mine</b> 750 Komori, Kokuraminami-ku, Kitakyūsu-shi, Fukuoka 803-0182 Tel. +81-93-451-0131 Fax. +81-93-451-0432	■ <b>Tokyo Branch</b> Iino Building, 2-1-1 Uchisaiwaicho, Chiyoda-ku, Tokyo 100-8521 Tel. +81-3-6275-0396 Fax. +81-3-6275-0399
■ <b>Iwate Plant</b> 50 Hanebōri, Nagasaka, Higashiyamacho, Ichinoseki-shi, Iwate 029-0302 Tel. +81-191-47-3131 Fax. +81-191-47-4090	■ <b>Ube Coal Center</b> 1980-29 Okinoyama, Kogushi, Ube-shi, Yamaguchi 755-8633 Tel. +81-836-31-5971 Fax. +81-836-31-5985	■ <b>Hokuriku Branch</b> Kanazawa Park Building, 3-1-1 Hirooka, Kanazawa-shi, Ishikawa 920-0031 Tel. +81-76-233-5141 Fax. +81-76-233-5147
■ <b>Yokoze Plant</b> 2270 Yokoze, Yokozemachi, Chichibu-gun, Saitama 368-8501 Tel. +81-494-23-1111 Fax. +81-494-23-7603	■ <b>Ube Power Plant</b> 1980-10 Kogushi, Ube-shi, Yamaguchi 755-8633 Tel. +81-836-31-5972 Fax. +81-836-31-6417	■ <b>Nagoya Branch</b> Nishiki Park Building, 2-4-3 Nishiki, Naka-ku, Nagoya-shi, Aichi 460-0003 Tel. +81-52-222-2620 Fax. +81-52-222-2630
■ <b>Ube Cement Plant</b> 1978-2 Kogushi, Ube-shi, Yamaguchi 755-8633 Tel. +81-836-31-0111 Fax. +81-836-35-2875	■ <b>Coal Technical Center</b> 1980 Okinoyama, Kogushi, Ube-shi, Yamaguchi 755-8633 Tel. +81-836-31-6549 Fax. +81-836-31-6084	■ <b>Osaka Branch</b> OAP Tower, 1-8-30 Tenmabashi, Kita-ku, Osaka-shi, Osaka 530-6028 Tel. +81-6-6357-2901 Fax. +81-6-6357-2902
■ <b>Isa Cement Plant</b> 4768 Isa, Isacho, Mine-shi, Yamaguchi 759-2222 Tel. +81-837-52-1212 Fax. +81-837-52-1750	■ <b>Research &amp; Development Center (Yokoze)</b> 2270 Yokoze, Yokozemachi, Chichibu-gun, Saitama 368-8504 Tel. +81-494-23-6073 Fax. +81-494-23-6093	■ <b>Shikoku Branch</b> Hyakujuyon Building, 5-1 Kameicho, Takamatsu-shi, Kagawa 760-0050 Tel. +81-87-863-0370 Fax. +81-87-863-0361
■ <b>Kyushu Plant</b> 12 Matsubaracho, Kandamachi, Miyako-gun, Fukuoka 800-0396 Tel. +81-93-434-0081 Fax. +81-93-436-2041	■ <b>Research &amp; Development Center (Ube)</b> 1-6 Okinoyama, Kogushi, Ube-shi, Yamaguchi 755-8633 Tel. +81-836-22-6150 Fax. +81-836-22-6497	■ <b>Chugoku Branch</b> Hiroshima Kogin Building, 2-1-22 Kamiyacho, Naka-ku, Hiroshima-shi, Hiroshima 730-0031 Tel. +81-82-247-9521 Fax. +81-82-247-9621
■ <b>Kurosaki District</b> 1-1 Kukinamimachi Yahatanishi-ku Kitakyūsu-shi, Fukuoka 807-0812 Tel. +81-93-641-4111 Fax. +81-93-622-2447	■ <b>Hokkaido Branch</b> Sapporo Center Building, 6-2-2 Kita5-jonishi, Chuo-ku, Sapporo-shi, Hokkaido 060-0005 Tel. +81-11-231-7131 Fax. +81-11-231-7156	■ <b>Kyushu Branch</b> Hinode Tenjin Building, 1-12-20 Tenjin, Chuo-ku, Fukuoka-shi, Fukuoka 810-0001 Tel. +81-92-752-6101 Fax. +81-92-752-6109
■ <b>Kanda Cement Plant</b> 7 Nagahamacho, Kandamachi, Miyako-gun, Fukuoka 800-0311 Tel. +81-93-434-2111 Fax. +81-93-434-0179	■ <b>Tohoku Branch</b> JRE Higashi Nibancho Square, 4-1-25 Ichibancho, Aoba-ku, Sendai-shi, Miyagi 980-0811 Tel. +81-22-711-5710 Fax. +81-22-711-5717	■ <b>Okinawa Office</b> Nissei Naha Center Building, 1-12-12 Kumoji, Naha-shi, Okinawa 900-0015 Tel. +81-98-863-1121 Fax. +81-98-863-1264

## Associated Companies, Etc.

■ <b>KUSHIRO UBE Co., Ltd.</b> 5-1-24 Tottoriminami, Kushiro-shi, Hokkaido 084-0905 Tel. +81-154-51-2101 Fax. +81-154-51-2853	■ <b>Hokuryo Aggregate Co.,Ltd.</b> 4-1-14 Kita31-jonishi, Kita-ku, Sapporo-shi, Hokkaido 001-0031 Tel. +81-11-792-8612 Fax. +81-11-351-2912	■ <b>Materials Tohoku Corporation</b> 50 Hanebōri, Nagasaka, Higashiyamacho, Ichinoseki-shi, Iwate 029-0032 Tel. +81-191-48-4745 Fax. +81-191-48-4891
■ <b>Bekikai Ube Concrete Co., Ltd.</b> 5-1-24 Tottoriminami, Kushiro-shi, Hokkaido 084-0905 Tel. +81-154-51-2101 Fax. +81-154-51-2853	■ <b>Hokuryo Logistics Co.,Ltd.</b> 1-1-9 Kaiun, Kushiro-shi, Hokkaido 085-0023 Tel. +81-154-23-8195 Fax. +81-154-23-8197	■ <b>R-Koma Ltd.</b> 9-1 Iwakura, Kurikomaiwagasaki, Kurihara-shi, Miyagi 989-5301 Tel. +81-228-45-5771 Fax. +81-228-45-5775
■ <b>Hokkaido Ube Co., Ltd.</b> 1-2-37 Higashinaebo1-jo, Higashi-ku, Sapporo-shi, Hokkaido 007-0801 Tel. +81-11-781-2030 Fax. +81-11-782-6593	■ <b>Ichinoseki Remicon Co.,Ltd.</b> 64-1 Iwanosawa, Mashiba, Ichinoseki-shi, Iwate 021-0901 Tel. +81-191-26-2275 Fax. +81-191-21-3074	■ <b>MU MATEX Co.,Ltd.</b> Seavans South Building, 1-2-3 Shibaura, Minato-ku, Tokyo 105-0023 Tel. +81-3-5419-6206 Fax. +81-3-5419-6265
■ <b>Hokkaido Ube Transportation Co., Ltd.</b> 2-6-11 Irifuneco, Tomakomai-shi, Hokkaido 053-0003 Tel. +81-144-34-2730 Fax. +81-144-34-2731	■ <b>Daikyo Kigyo Co., Ltd.</b> 56 Toinosawa, Hiraizumi, Hiraizumicho, Nishiiwai-gun, Iwate 029-4102 Tel. +81-191-34-2131 Fax. +81-191-34-2135	■ <b>MUCC Construction Materials Corporation</b> Tennoz Ocean Square, 2-2-20 Higashishinagawa, Shinagawa-ku, Tokyo 140-0002 Tel. +81-3-5781-7510 Fax. +81-3-5781-7521
■ <b>Hokuryo Corp.</b> 4-1-14 Kita31-jonishi, Kita-ku, Sapporo-shi, Hokkaido 001-0031 Tel. +81-11-792-8612 Fax. +81-11-351-2912	■ <b>HIRAIZUMI Co.,Ltd.</b> 56 Toinosawa, Hiraizumi, Hiraizumicho, Nishiiwai-gun, Iwate 029-4102 Tel. +81-191-46-2860 Fax. +81-191-46-2774	■ <b>MU Information system Co.,Ltd.</b> Koshin Building, 1-10 Kandaogawamachi, Chiyoda-ku, Tokyo 101-0052 Tel. +81-3-5256-2370 Fax. +81-3-5256-2374